



## TIGER WORLDWIDE NETWORK



## Series 68 Superdurable Powder Coatings



QUALICOAT Class II | GSB Master

### A quantum leap in color and gloss retention

The facade: face and protective mantle of a building. Esthetic. Technical. Functional. And resistant to sun, wind and weather. After all, the building envelope not only emphasizes the value of an object, but also protects it against environmental influences.

Increasing UV exposure in all latitudes, climatic changes, and strict quality specifications according to GSB International or QUALICOAT make the coating on the facade the supreme discipline.

This is where TIGER comes into play. Our super durable powder coating TIGER Drylac® Series 68 guarantees architects and clients compliance with these quality standards and ensures that colors and effects shine even after many years. From Vienna to Singapore. From Frankfurt to New York.

current address and other information at  
[www.tiger-coatings.com](http://www.tiger-coatings.com)



1530 / 04/18

# TIGER Drylac®

Superdurable Powder Coatings for Metal Facades & Steel Construction



GL/GL = smooth glossy | GL/SGL = smooth semi gloss | GL/MA = smooth matte | FS/MA = fine texture matte  
 ME/GL = metallic glossy | ME/SGL = metallic semi gloss | ME/MA = metallic smooth matte  
 MF/MA = metallic fine texture matte



**Deore 3606 - 3D**  
 TIGER Drylac® 68/90420 | ME/SGL | A



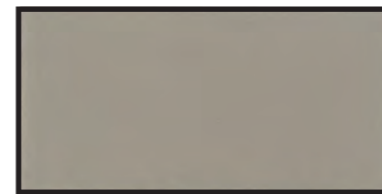
**approx. Unicol Anolok 549**  
 TIGER Drylac® 68/71168 | ME/MA | A



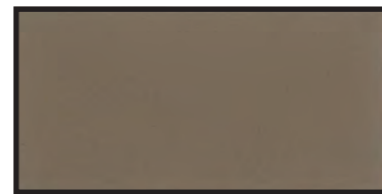
**Deore 004**  
 TIGER Drylac® 68/60605 | ME/MA | B



**approx. C34 Anodized**  
 TIGER Drylac® 68/60306 | ME/MA | B



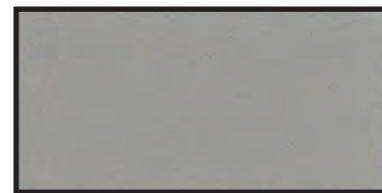
**approx. C31 Anodized**  
 TIGER Drylac® 68/90177 | ME/MA | B



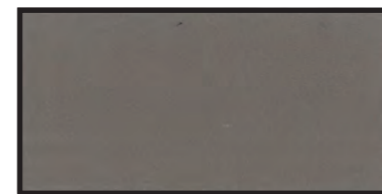
**approx. C32 Anodized**  
 TIGER Drylac® 68/15069 | ME/MA | B



**Argento 620**  
 TIGER Drylac® 68/90346 | ME/MA | B



**Champagne 611**  
 TIGER Drylac® 68/90339 | ME/MA | B



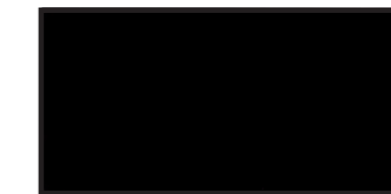
**Terra 610**  
 TIGER Drylac® 68/71415 | ME/MA | B



**Terra 615**  
 TIGER Drylac® 68/71422 | MF/MA | B



**Mica 618**  
 TIGER Drylac® 68/80255 | MF/MA | B



**Black Anodized 54B**  
 TIGER Drylac® 68/80145 | ME/MA | B



**approx. C33 Anodized**  
 TIGER Drylac® 68/60307 | ME/MA | B



**Bianco 612**  
 TIGER Drylac® 68/10330 | ME/SGL | B



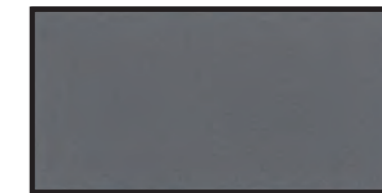
**RAL 9016**  
 TIGER Drylac® 68/10078 | GL/MA



**Mica 618**  
 TIGER Drylac® 68/80255 | MF/MA | B



**Black Anodized 54B**  
 TIGER Drylac® 68/80145 | ME/MA | B



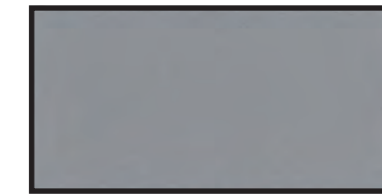
**Pale Blue-Grey Anodized B711**  
 TIGER Drylac® 68/70765 | ME/MA | B



**Dark Blue-Grey Anodized B717**  
 TIGER Drylac® 68/70763 | ME/MA | B



**Argento 621**  
 TIGER Drylac® 68/90350 | ME/GL | B



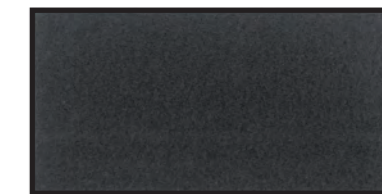
**Argento 610**  
 TIGER Drylac® 68/90296 | ME/MA | B



**approx. C0 Anodized**  
 TIGER Drylac® 68/90179 | ME/MA | A



**RAL 7016**  
 TIGER Drylac® 68/70153 | GL/MA



**Medium Blue-Grey Anodized B715**  
 TIGER Drylac® 68/70764 | ME/MA | B

ONLINE VERSION: The colors/effects shown here will deviate from the original color/effect due to screen technology. When processing the appropriate Product Data Sheets and Technical Information Sheets must be consulted. Metallic effects: please observe the instructions for Application Categories A - D acc. to the Technical Information Sheet No. 44. All items available from stock.